

# Hampshire Water Transfer and Water Recycling Project

## Environmental Statement – Figure 4.1 Pipeline corridor sections assessed at Stage 3

**VOLUME NUMBER: 6**

**PLANNING INSPECTORATE SCHEME NUMBER: WA010002**

**APPLICATION DOCUMENT REFERENCE: 6.3**

**APFP REGULATION: 5(2)(a)**

May 2026

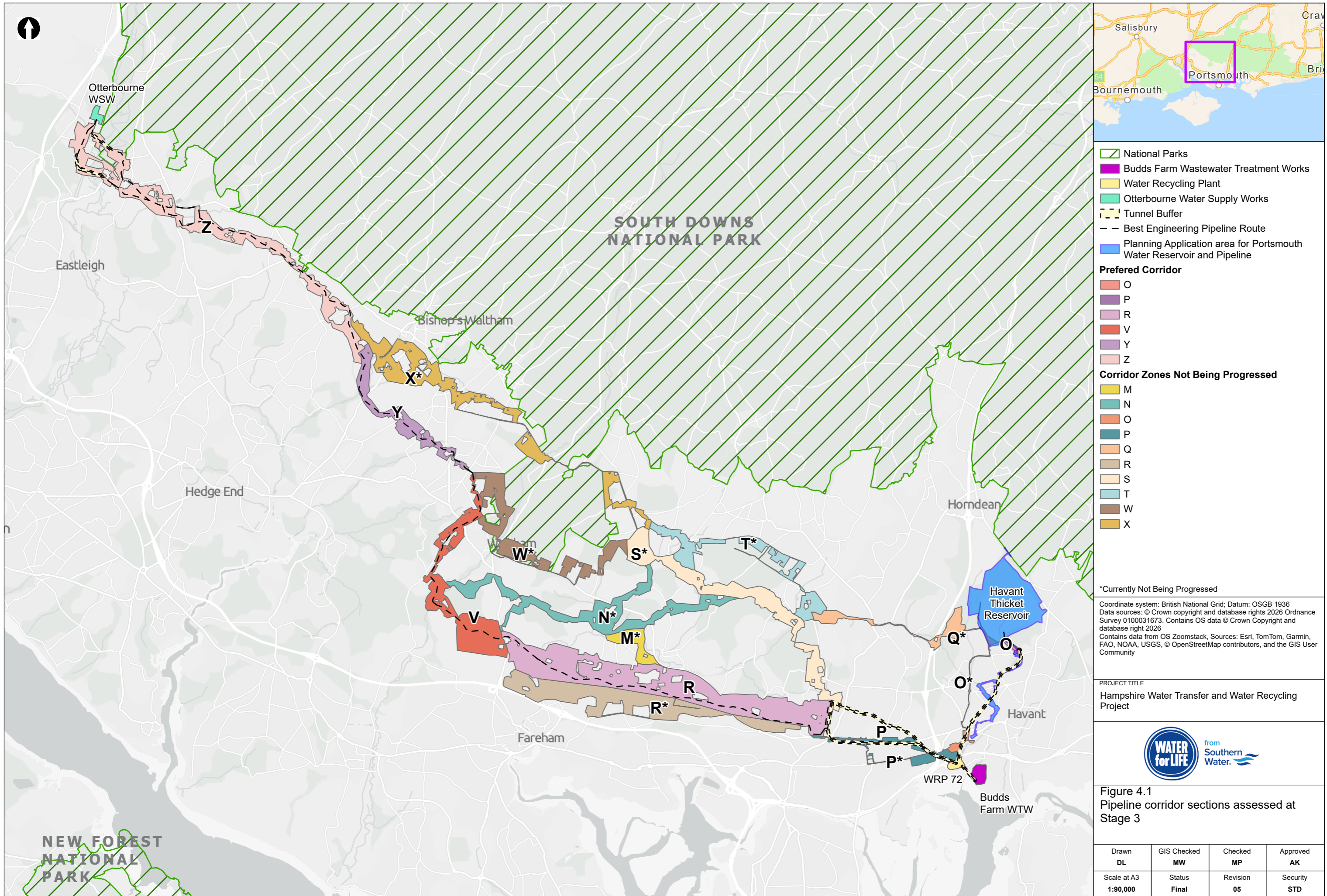
Version 0



from  
**Southern  
Water.** 

The Southern Water logo consists of three stylized, wavy blue lines of varying lengths, positioned to the right of the text 'Southern Water'.





- National Parks
  - Budds Farm Wastewater Treatment Works
  - Water Recycling Plant
  - Otterbourne Water Supply Works
  - Tunnel Buffer
  - Best Engineering Pipeline Route
  - Planning Application area for Portsmouth Water Reservoir and Pipeline
- Preferred Corridor**
- O
  - P
  - R
  - V
  - Y
  - Z
- Corridor Zones Not Being Progressed**
- M
  - N
  - O
  - P
  - Q
  - R
  - S
  - T
  - W
  - X

\*Currently Not Being Progressed

Coordinate system: British National Grid; Datum: OSGB 1936  
 Data sources: © Crown copyright and database rights 2026 Ordnance Survey 0100031673. Contains OS data © Crown Copyright and database right 2026  
 Contains data from OS Zoomstack, Sources: Esri, TomTom, Garmin, FAO, NOAA, USGS, © OpenStreetMap contributors, and the GIS User Community

PROJECT TITLE  
 Hampshire Water Transfer and Water Recycling Project



Figure 4.1  
 Pipeline corridor sections assessed at Stage 3

Drawn <b>DL</b>	GIS Checked <b>MW</b>	Checked <b>MP</b>	Approved <b>AK</b>
Scale at A3 <b>1:90,000</b>	Status <b>Final</b>	Revision <b>05</b>	Security <b>STD</b>

Drawing Number  
**PC5223-RHD-ES-ZZ-D-Z-0107**

